



12-14-1999

## The Grizzly, December 14, 1999

Stephanie Restine  
*Ursinus College*

Kelly Tessena  
*Ursinus College*

Cory Braiterman  
*Ursinus College*

Diane Johnson  
*Ursinus College*

Fran Shaughnessy  
*Ursinus College*

Follow this and additional works at: <https://digitalcommons.ursinus.edu/grizzlynews>



Part of the [Cultural History Commons](#), [Higher Education Commons](#), [Liberal Studies Commons](#), [Social History Commons](#), and the [United States History Commons](#)

[Click here to let us know how access to this document benefits you.](#)

---

### Recommended Citation

Restine, Stephanie; Tessena, Kelly; Braiterman, Cory; Johnson, Diane; and Shaughnessy, Fran, "The Grizzly, December 14, 1999" (1999). *Ursinus College Grizzly Newspaper*. 455.  
<https://digitalcommons.ursinus.edu/grizzlynews/455>

This Book is brought to you for free and open access by the Newspapers at Digital Commons @ Ursinus College. It has been accepted for inclusion in Ursinus College Grizzly Newspaper by an authorized administrator of Digital Commons @ Ursinus College. For more information, please contact [aprock@ursinus.edu](mailto:aprock@ursinus.edu).

# THE GRIZZLY

*The road to success is always under construction.*  
-- Jim Miller

Volume XXIII

Number XII

The Student Newspaper of Ursinus College

December 14, 1999

## A Miracle of Science

### Missing Link to Graduation and Real World Reappears for UC Bio Majors

**Stephanie Restine**

*Co-Editor-in-Chief*

On Thursday, Dec. 9, 1999, biology students received the news that Bio 426W-Molecular Biology will be offered in the Spring semester of 2000. This writing intensive biology course had previously been eliminated as a class choice, much to the dismay of Ursinus biology majors.

The Molecular Biology course was not originally offered because the usual instructor, Dr. Anthony Lobo, will be going on sabbatical in the spring. Through the efforts of students and the Biology Department, Dr. Michael Schwartz has accepted the position as the Molecular Biology instructor.

Dr. Schwartz has an impressive background in biology and is a molecular biologist. At this time, Dr. Schwartz is currently instructing a Bio 225-Genetics laboratory section in the Ursinus curriculum.

Several biology students interested in taking the course are pleased that it will be offered, but some are still not satisfied with the way the situation was handled. Senior biology major Lori Oldrati said, "I think the Bio Department should have realized that this would happen earlier." By canceling Immunology in the fall and then not offering Molecular until last minute, many people are having a hard time fulfilling requirements for graduation."

Although a great deal of work has been done by both students

and faculty to ensure the option of Molecular Biology, the class will only be offered if eight or more students enroll in the course. According to Biology Department Chairperson Dr. Peter Small, the enrollment of eight students is the minimum requirement for hiring an adjunct instructor.

Several students have e-mailed Dr. Small to express interest in this course, but very few have registered for Molecular Biology. Dr. Small urges those interested to sign up quickly. "If you're thinking of registering, please try to do it before the end of this week so that you (the students) will know (whether or not the class will run) before leaving campus for Winter Break."

## Debate and Discussion Hailed a Success by College Dems

**Kelly Tessena**

*Staff Writer*

Senate candidate Bob Rovner gave a speech to a group of twenty Ursinus students on Wednesday, Dec. 8, 1999 in Bomberger Auditorium.

Rovner opened by mentioning that he was the youngest state senator in Pennsylvania and that his interest in politics was sparked when he was in college. Rovner was then involved in a campaign to convince the state government to stop charging sales tax on college textbooks.

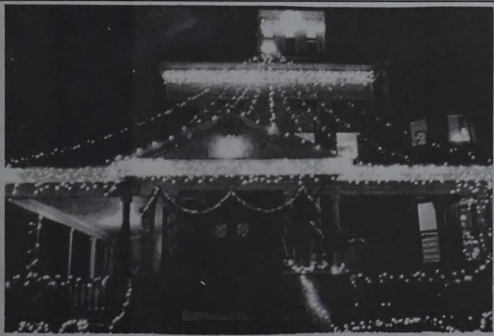
Rovner also discussed his position on several important issues.

One of these was gun control. Rovner was quick to point out that he had no intention of taking guns away from sportsmen. He stated that weapons intended for killing people rather than animals

should be regulated and that criminals should not have access to guns. Rovner also stated that, unlike Rick Santorum, the current senator, he is not "owned by the National Rifle Association." In other words, he is not controlled by campaign donations from the NRA.

In addition to gun control, Rovner mentioned one issue that is likely to be of interest to many Ursinus students and their parents: a proposed tax break for middle-class families with children in college. When asked if there was a specific income level cut-off for families receiving this tax break, he stated that it should be a yearly income of \$150,000 or less.

"Ursinus students who did attend, actively participated and asked Mr. Rovner questions on tough issues," President of Ursinus' College Democrats, junior Jessica Steiner said.

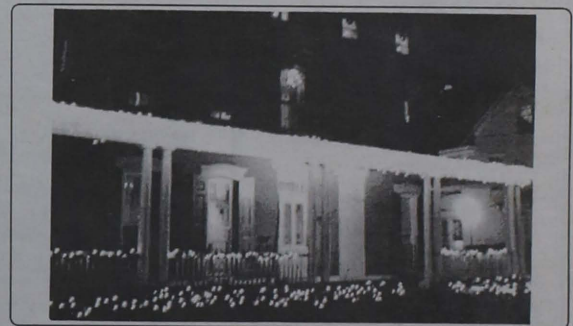


Hobson takes first in the holiday decorating contest.

*Photo by Sue Fialkowski*

Holiday Spirit  
Shines Bright  
Across Campus  
During  
Residence Hall  
Holiday Decorating  
Contest!

See page 7 for Pictures  
and a Complete  
List of Winners



Duryea decorates for Christmas.

*Photo by Sue Fialkowski*

NEWS

**Biology Course  
Reinstated**

**Front Page**

FEATURES 1

**A Semester in  
Review**

**Page 2**

FEATURES 2

**Holiday Decorating  
Contest**

**Page 7**

SPORTS

**First Win for Women's  
Basketball**

**Page 8**



# THE GRIZZLY

**FRANCEEN SHAUGHNESSY**  
and  
**STEPHANIE RESTINE**  
*Editors-in-Chief*

**DR. LYNNE EDWARDS**  
*Faculty Advisor*

**DAN REIMOLD**  
*News Editor*

**ERNY HOKE**  
*Features and Photography Editor*

**CHRIS COCCA**  
*Opinion Editor*

**JEFF CHURCH**  
*A&E Editor*

**DIANE JOHNSON**  
*Sports Editors*

**LAUREN FLANAGAN**  
**HEATHER GURK**  
*Advertising Managers*

**JENNIFER BRENNAN**  
**LAUREN CYRSKY**  
**JENNIFER HEIL**  
*Copy Editors*

### Editorial Policy

All letters and articles submitted to *The Grizzly* must be signed by the author. In the interest of content integrity, anonymous articles will not be published. Opinions that appear in articles are those of those authors, and not necessarily those of the student body or administration. *The Grizzly* reserves the right to edit any submission for grammatical, legal, and/or spatial purposes.

Submissions to *The Grizzly* can be dropped off in the submission box on the second floor stairwell of Bomberger. Deadlines are Thursdays at 5pm.

## A Semester In Review





— Anthropology/Sociology —						
ANSO 400W	Hist & Theories	GALLAGHER,	Friday, December 17	9:00am-12:00pm	Bamberger Hall 108	
— Anthropology —						
ANIH 100	Sociocult Anth	OBOLER, R.	Friday, December 17	1:00pm-4:00pm	Bamberger Hall 108	
ANIH 242	Peoples Africa	OBOLER, R.	Wednesday, December 15	9:00am-12:00pm	Bamberger Hall 108	
— Art —						
ART 100	Intro to Art	XARAS, T.	Wednesday, December 15	9:00am-12:00pm	F. W. Olin Hall 009	
ART 201	Studio Art I	XARAS, T.	Thursday, December 16	9:00am-12:00pm	Fetterolf House Studio	
ART 204	Photography	MCCARIHY,	Tuesday, December 14	1:00pm-4:00pm	Fetterolf House DkRm	
ART 204 B	Photography	MCCARIHY,	Friday, December 17	9:00am-12:00pm	Fetterolf House DkRm	
ART 213	Hist of Art III	POTTER-HEN	Friday, December 17	9:00am-12:00pm	F. W. Olin Hall 108	
ART 301	Drawing	XARAS, T.	Saturday, December 1	9:00am-12:00pm	Fetterolf House Studio	
ART 330	Museum Studies	POTTER-HEN	Saturday, December 18	9:00am-12:00pm	F. W. Olin Hall 108	
— Biology —						
BIO 100Q	Intro Bio	FIELDS, M.	Monday, December 13	1:00pm-4:00pm	F. W. Olin Hall 107	
BIO 111Q	Prin of Bio	MAHAFFY, L	Monday, December 13	9:00am-12:00pm	F. W. Olin Hall Aud	
BIO 225	Cell Biology	KOHN, R.	Tuesday, December 14	9:00am-12:00pm	Thomas Hall 324	
BIO 226	Genetics	GODDARD, K	Wednesday, December 15	9:00am-12:00pm	Thomas Hall 324	
BIO 250	Environmtl Bio	SIDIE, J.	Friday, December 17	1:00pm-4:00pm	Pfahler Hall 207	
BIO 305	Human Anatomy	ALLEN, C.	Monday, December 13	9:00am-12:00pm	Thomas Hall 324	
BIO 315	Biochemistry	RUTLEDGE,	Monday, December 13	1:00pm-4:00pm	Pfahler Hall 210	
BIO 335	Plant Physiology	FIELDS, M.	Friday, December 17	1:00pm-4:00pm	Thomas Hall 319	
BIO 345	Microbiology	LOBO, A.	Friday, December 17	1:00pm-4:00pm	Thomas Hall 324	
BIO 349	Exp Physiology	BAILEY, B.	Tuesday, December 14	9:00am-12:00pm	Pfahler Hall 106	
BIO 415W	Ecology	SMALL, P.	Wednesday, December 15	9:00am-12:00pm	Thomas Hall 323	
BIO 431W	Neurobiology	SIDIE, J.	Tuesday, December 14	9:00am-12:00pm	Thomas Hall 314	
BIO 459W	Virology	GODDARD, K	Tuesday, December 14	9:00am-12:00pm	F. W. Olin Hall 301	
— Chemistry —						
CHEM 105 A	Gen Chem I	HESS, R.	Friday, December 17	1:00pm-4:00pm	Pfahler Hall 208	
CHEM 105 B	Gen Chem I	PRICE, A.	Friday, December 17	1:00pm-4:00pm	Pfahler Hall 107	
CHEM 105 C	Gen Chem I	SCHULTZ, R	Friday, December 17	1:00pm-4:00pm	Pfahler Hall 209	
CHEM 105 D	Gen Chem I	PRICE, A.	Tuesday, December 14	9:00am-12:00pm	Pfahler Hall 107	
CHEM 105 E	Gen Chem I	HESS, R.	Tuesday, December 14	9:00am-12:00pm	Pfahler Hall 208	
CHEM 205 A	Organic Chem II	TORTORELLI	Friday, December 17	1:00pm-4:00pm	Pfahler Hall 100	
CHEM 205A A	Organic II Lab	TORTORELLI	Thursday, December 16	1:00pm-4:00pm	Pfahler Hall 210	
CHEM 205A B	Organic II Lab	KNECHEL, M	Saturday, December 18	9:00am-12:00pm	Pfahler Hall 210	
CHEM 205A C	Organic II Lab	KNECHEL, M	Thursday, December 16	9:00am-12:00pm	Pfahler Hall 210	
CHEM 205 B	Organic Chem II	TORTORELLI	Tuesday, December 14	9:00am-12:00pm	Pfahler Hall 100	
CHEM 211	Spectral Interp	TORTORELLI	Monday, December 13	1:00pm-4:00pm	Pfahler Hall 109	
CHEM 309	Physical Chem	GAEDE, H.	Friday, December 17	1:00pm-4:00pm	Pfahler Hall 210	
CHEM 309A A	Phys Chem Lab	GAEDE, H.	Friday, December 17	9:00am-12:00pm	Pfahler Hall 208	
CHEM 401	Adv Inorganic	PRICE, A.	Wednesday, December 15	9:00am-12:00pm	Pfahler Hall 208	
CHEM 401A	Adv Inorgan Lab	PRICE, A.	Friday, December 17	9:00am-12:00pm	Pfahler Hall 210	
— Computer Science —						
CS 271	Computer Sci I	JESSUP, P.	Friday, December 17	1:00pm-4:00pm	Pfahler Hall 109	
CS 371	Data Struc&Algo	JESSUP, P.	Tuesday, December 14	9:00am-12:00pm	Pfahler Hall 109	
CS 471	Seminar in CS	HAGELGANS,	Saturday, December 18	1:00pm-4:00pm	Pfahler Hall 106	
— Communication Studies & Theatre —						
CST 105 A	Mass Media & So	BRAND, K.	Tuesday, December 14	9:00am-12:00pm	F. W. Olin Hall 107	
CST 105 B	Mass Media & So	BRAND, K.	Saturday, December 18	1:00pm-4:00pm	F. W. Olin Hall 108	
CST 105 C	Mass Media & So	HUSSON, W.	Saturday, December 18	1:00pm-4:00pm	Ritter Center 210	
CST 110 A	Interpersonal	BARATZ-GOO	Thursday, December 16	1:00pm-4:00pm	Ritter Center 210	
CST 110 B	Interpersonal	BARATZ-GOO	Wednesday, December 15	9:00am-12:00pm	Ritter Center 210	
CST 111	Intro to Theatr	SCUDERA, D	Saturday, December 18	1:00pm-4:00pm	Ritter Center 202	
CST 200W	Comm Theory&Res	HUSSON, W.	Friday, December 17	1:00pm-4:00pm	Ritter Center 202	
CST 201 A	Public Speaking	GOLDBERG,	Friday, December 17	1:00pm-4:00pm	Ritter Center 210	
CST 201 B	Public Speaking	GOLDBERG,	Tuesday, December 14	9:00am-12:00pm	Ritter Center 210	
CST 207	Journalism	EDWARDS, L	Thursday, December 16	1:00pm-4:00pm	F. W. Olin Hall 004	
CST 210	Video Prod I	MILLER, J.	Saturday, December 18	9:00am-12:00pm	Ritter Center Studio	
CST 325	Small Group	CZUBAROFF,	Saturday, December 18	9:00am-12:00pm	Ritter Center 202	



CST 355	Media Culture &	EDWARDS, L.	Saturday, December 18	1:00pm-4:00pm	F. W. Olin Hall 107
CST 411A	Advanced Acting	HENRY, J.	Wednesday, December 15	9:00am-12:00pm	Ritter Center 202

— Economics & Business Administration —

ECBA 100 B	Intro to Econ	MCLENNAN,	Monday, December 13	9:00am-12:00pm	Bomberger Hall 200
ECBA 100 C	Intro to Econ	RANDALL, K	Wednesday, December 15	9:00am-12:00pm	Bomberger Hall Aud
ECBA 100 D	Intro to Econ	MCLENNAN,	Thursday, December 16	1:00pm-4:00pm	Bomberger Hall 200
ECBA 100 E	Intro to Econ	ECONOMOPOU	Wednesday, December 15	9:00am-12:00pm	Bomberger Hall 209
ECBA 100 F	Intro to Econ	ECONOMOP,D	Wednesday, December 15	9:00am-12:00pm	F. W. Olin Hall 102
ECBA 105 A	Financial Acct	BOWERS, B.	Tuesday, December 14	9:00am-12:00pm	F. W. Olin Hall 108
ECBA 105 B	Financial Acct	HARRIS, C.	Saturday, December 18	1:00pm-4:00pm	Bomberger Hall 209
ECBA 203	Int Fin Acct I	BOWERS, B.	Saturday, December 18	1:00pm-4:00pm	Bomberger Hall 109
ECBA 205	Managerial Acct	HARRIS, C.	Thursday, December 16	1:00pm-4:00pm	Bomberger Hall 209
ECBA 206	Income Tax Acct	BOWERS, B.	Friday, December 17	1:00pm-4:00pm	F. W. Olin Hall 108
ECBA 218	Management	PHILLIPS,	Thursday, December 16	1:00pm-4:00pm	Bomberger Hall 108
ECBA 251	Micro Theory	MCLENNAN,	Tuesday, December 14	9:00am-12:00pm	Bomberger Hall 200
ECBA 252	Macro Theory	ECONOMOPOU	Monday, December 13	1:00pm-4:00pm	Bomberger Hall 209
ECBA 304	Auditing	TOW, S.	Thursday, December 16	1:00pm-4:00pm	Bomberger Hall 100
ECBA 305Q	Research Method	O'NEILL, H	Monday, December 13	1:00pm-4:00pm	Bomberger Hall 109
ECBA 306	Corp Finance	SALAVITABA	Saturday, December 18	9:00am-12:00pm	Bomberger Hall 200
ECBA 307	Marketing	PHILLIPS,	Saturday, December 18	1:00pm-4:00pm	Bomberger Hall 200
ECBA 308	Intn'l Trade	O'NEILL, H	Wednesday, December 15	9:00am-12:00pm	Bomberger Hall 214
ECBA 326	Managerial Fin	ECONOMOPOU	Monday, December 13	9:00am-12:00pm	Bomberger Hall 209
ECBA 332	Health Econ	O'NEILL, H	Saturday, December 18	9:00am-12:00pm	Bomberger Hall 214
ECBA 410W	Bus Strategy	PHILLIPS,	Thursday, December 16	9:00am-12:00pm	Bomberger Hall 209

— English —

ENGL 100 A	First-Year Comp	BATES, N.	Tuesday, December 14	9:00am-12:00pm	F. W. Olin Hall 103
ENGL 100 B	First-Year Comp	BATES, N.	Saturday, December 18	1:00pm-4:00pm	F. W. Olin Hall 103
ENGL 100 C	First-Year Comp	AGOSTINELL	Wednesday, December 15	9:00am-12:00pm	F. W. Olin Hall 201
ENGL 100 D	First-Year Comp	AGOSTINELL	Saturday, December 18	9:00am-12:00pm	F. W. Olin Hall 301
ENGL 100 E	First-Year Comp	BOWERS, C.	Tuesday, December 14	9:00am-12:00pm	F. W. Olin Hall 201
ENGL 100 F	First-Year Comp	BATES, N.	Friday, December 17	1:00pm-4:00pm	Bomberger Hall 106
ENGL 205	Fiction Writing	VOLKMER, J	Friday, December 17	9:00am-12:00pm	F. W. Olin Hall 317
ENGL 206	Poetry Writing	KEITA, N.	Wednesday, December 15	9:00am-12:00pm	F. W. Olin Hall 317
ENGL 208	Adv Expository	SCHROEDER,	Tuesday, December 14	9:00am-12:00pm	F. W. Olin Hall 302
ENGL 209C	Memoir Writing	KEITA, N.	Saturday, December 18	9:00am-12:00pm	F. W. Olin Hall 303
ENGL 215	Medieval & Ren	PERREITEN,	Monday, December 13	9:00am-12:00pm	F. W. Olin Hall 101
ENGL 217	Romantic & Vict	DOLE, C.	Thursday, December 16	1:00pm-4:00pm	F. W. Olin Hall 103
ENGL 219	19th C. Am Lit	SCHROEDER,	Thursday, December 16	1:00pm-4:00pm	F. W. Olin Hall 201
ENGL 220	20th C. Am Lit	JAROFF,	Friday, December 17	9:00am-12:00pm	F. W. Olin Hall 303
ENGL 221W	Lit Criticism	KELLEY, M.	Monday, December 13	9:00am-12:00pm	Unity House
ENGL 224	Japanese Lit	DECATUR, L	Saturday, December 18	9:00am-12:00pm	F. W. Olin Hall 317
ENGL 228	Women's Lit	SCHROEDER,	Wednesday, December 15	9:00am-12:00pm	F. W. Olin Hall 303
ENGL 280	Film Studies	DOLE, C.	Wednesday, December 15	9:00am-12:00pm	F. W. Olin Hall 108
ENGL 309	Shakespeare	DECATUR, L	Saturday, December 18	1:00pm-4:00pm	F. W. Olin Hall 301
ENGL 319	Satire	PERREITEN,	Friday, December 17	9:00am-12:00pm	F. W. Olin Hall 301
ENGL 340	Novel in Amer	KELLEY, M.	Saturday, December 18	9:00am-12:00pm	F. W. Olin Hall 217

— Exercise & Sport Science —

ESS 100 A	Conc Well/Fit	BORSORF,	Saturday, December 18	1:00pm-4:00pm	Helfferich Hall 202
ESS 100 B	Conc Well/Fit	BORSORF,	Tuesday, December 14	9:00am-12:00pm	Helfferich Hall 202
ESS 232W	Current Trends	DAVIDSON,	Friday, December 17	1:00pm-4:00pm	Helfferich Hall 201
ESS 267	Emergency Care	DAVIDSON,	Monday, December 13	1:00pm-4:00pm	Helfferich Hall 201
ESS 333	Drugs & Alcohol	BORSORF,	Wednesday, December 15	9:00am-12:00pm	Helfferich Hall 202
ESS 347	Well/Fit Adult	BORSORF,	Friday, December 17	1:00pm-4:00pm	Helfferich Hall 211
ESS 351	Struct Kines	WAILGUM, T	Wednesday, December 15	9:00am-12:00pm	Helfferich Hall 211
ESS 356	Elem Meth H&PE	ENGSTROM,	Tuesday, December 14	9:00am-12:00pm	Helfferich Hall 211
ESS 378	Athletic Inj	CHLAD, P.	Tuesday, December 14	1:00pm-4:00pm	Helfferich Hall 202

— French —

FREN 101	Elem Fren I	ZABEGALLO,	Friday, December 17	1:00pm-4:00pm	F. W. Olin Hall 009
FREN 111	Interm Fren I	ZABEGALLO	Tuesday, December 14	1:00pm-4:00pm	F. W. Olin Hall 102
FREN 201 A	Conv & Comp	TROUT, C.	Friday, December 17	1:00pm-4:00pm	Myrin Library 201
FREN 201 B	Conv & Comp	TROUT, C.	Tuesday, December 14	1:00pm-4:00pm	F. W. Olin Hall 201
FREN 251	Intro Fren Lit	GAYMAN, S.	Wednesday, December 15	9:00am-12:00pm	F. W. Olin Hall 305

— German —

GER 101	Elem Ger I	LUTTICHER,	Saturday, December 18	1:00pm-4:00pm	F. W. Olin Hall 101
GER 111	Interm Ger I	HALBFASS	Tuesday, December 14	1:00pm-4:00pm	F. W. Olin Hall 101



GER 201	Conv & Comp	LUTCHER,	Tuesday, December 14	1:00pm-4:00pm	F. W. Olin Hall 103
GER 251	Intro Ger Lit	HALEFASS	Thursday, December 16	1:00pm-4:00pm	F. W. Olin Hall 101
— Greek —					
GRK 101	Elementary Grk	WICKERSHAM	Tuesday, December 14	1:00pm-4:00pm	F. W. Olin Hall 205
GRK 201	Athens 5th Cent	WICKERSHAM	Wednesday, December 15	9:00am-12:00pm	F. W. Olin Hall 205
— History —					
HIST 101 A	Hist Trad Civ	DOUGHTY, R	Friday, December 17	1:00pm-4:00pm	F. W. Olin Hall 301
HIST 101 B	Hist Trad Civ	ALDRIDGE,	Friday, December 17	1:00pm-4:00pm	F. W. Olin Hall 303
HIST 101 C	Hist Trad Civ	ALDRIDGE,	Saturday, December 18	1:00pm-4:00pm	F. W. Olin Hall 303
HIST 101 D	Hist Trad Civ	CLARK, H.	Saturday, December 18	1:00pm-4:00pm	F. W. Olin Hall 009
HIST 221	Intro Am Hist	AKIN, W.	Monday, December 13	1:00pm-4:00pm	F. W. Olin Hall 303
HIST 243	Hist/Cult Japan	CLARK, H.	Thursday, December 16	1:00pm-4:00pm	F. W. Olin Hall 301
HIST 253	The Middle East	KING, R.	Wednesday, December 15	9:00am-12:00pm	F. W. Olin Hall 301
HIST 300G	Am Const'l & Legl	ALDRIDGE,	Thursday, December 16	1:00pm-4:00pm	F. W. Olin Hall 303
HIST 305	St/Soc Europe	DOUGHTY, R	Saturday, December 18	1:00pm-4:00pm	F. W. Olin Hall 305
HIST 361	East/West 13thC	CLARK, H.	Tuesday, December 14	9:00am-12:00pm	F. W. Olin Hall 305
HIST 365	Empires & Nations	KING, R.	Friday, December 17	1:00pm-4:00pm	F. W. Olin Hall 305
— Interdivisional Studies —					
IDS 101 A	World Lit I	VOLKMER, J	Friday, December 17	1:00pm-4:00pm	F. W. Olin Hall 201
IDS 101 B	World Lit I	HENRY, J.	Monday, December 13	1:00pm-4:00pm	F. W. Olin Hall 201
IDS 102	World Lit II	DECATUR, L	Tuesday, December 14	9:00am-12:00pm	F. W. Olin Hall 303
IDS 102 BA	World Lit II	CLOUSER, M	Thursday, December 16	9:00am-12:00pm	F. W. Olin Hall 102
IDS 102 BB	World Lit II	KEITA, N.	Thursday, December 16	9:00am-12:00pm	F. W. Olin Hall 107
— Japanese —					
JAPN 101	Elem Japn I	NISHIO, S.	Tuesday, December 14	1:00pm-4:00pm	F. W. Olin Hall 008
JAPN 111	Adv Elem Japn I	NISHIO, S.	Friday, December 17	1:00pm-4:00pm	F. W. Olin Hall 217
— Latin —					
LAT 101	Elementary Latin	STEWART,	Monday, December 13	9:00am-12:00pm	F. W. Olin Hall 301
LAT 201	Aeneas-Hannibal	STEWART,	Friday, December 17	1:00pm-4:00pm	F. W. Olin Hall 205
LAT 303	Hist Writers	WICKERSHAM	Saturday, December 18	9:00am-12:00pm	F. W. Olin Hall 205
— Mathematics —					
MATH 105	Calc for ECBA	NESLEN, J.	Friday, December 17	1:00pm-4:00pm	Bomberberger Hall 100
MATH 107	Calc w/Review I	WAIT, R.	Friday, December 17	1:00pm-4:00pm	Pfahler Hall 012
MATH 111 A	Calculus I	BEUERLE, J	Monday, December 13	9:00am-12:00pm	Pfahler Hall 012
MATH 111 B	Calculus I	SHUCK, J.	Friday, December 17	1:00pm-4:00pm	Pfahler Hall 106
MATH 111 C	Calculus I	THIEL, L.	Tuesday, December 14	9:00am-12:00pm	Pfahler Hall 209
MATH 111 D	Calculus I	THIEL, L.	Saturday, December 18	1:00pm-4:00pm	Pfahler Hall 209
MATH 111 E	Calculus I	WAIT, R.	Tuesday, December 14	1:00pm-4:00pm	Pfahler Hall 107
MATH 112	Calculus II	BEUERLE, J	Tuesday, December 14	1:00pm-4:00pm	Pfahler Hall 109
MATH 211	Multivar Calc	SHUCK, J.	Tuesday, December 14	1:00pm-4:00pm	Pfahler Hall 012
MATH 235	Linear Algebra	BEUERLE, J	Tuesday, December 14	9:00am-12:00pm	Pfahler Hall 007
MATH 241Q A	Statistics I	NESLEN, J.	Monday, December 13	9:00am-12:00pm	Bomberberger Hall 100
MATH 241Q B	Statistics I	NESLEN, J.	Tuesday, December 14	9:00am-12:00pm	Bomberberger Hall 100
MATH 241Q C	Statistics I	COLEMAN, R	Saturday, December 18	1:00pm-4:00pm	Pfahler Hall 012
MATH 241Q D	Statistics I	JESSUP, P.	Monday, December 13	9:00am-12:00pm	Pfahler Hall 109
MATH 243	Biostatistics	COLEMAN, R	Tuesday, December 14	9:00am-12:00pm	Pfahler Hall 012
MATH 311W	Intro Analysis I	THIEL, L.	Monday, December 13	1:00pm-4:00pm	Pfahler Hall 107
MATH 321	Intro Topology	HAGELGANS,	Friday, December 17	1:00pm-4:00pm	Pfahler Hall 007
MATH 341	Probability	COLEMAN, R	Thursday, December 16	1:00pm-4:00pm	Pfahler Hall 109
— Music —					
MUS 121	Fundamentals	DAVID, N.	Thursday, December 16	1:00pm-4:00pm	Bomberberger Hall 014
MUS 203	Romantic Era	FRENCH, J.	Saturday, December 18	9:00am-12:00pm	Bomberberger Hall 226
— Philosophy and Religion —					
PHIL 101 A	Know, Val&Real	GILDEA, E.	Friday, December 17	1:00pm-4:00pm	F. W. Olin Hall 107
PHIL 101 B	Know, Val&Real	HARIMAN, K	Friday, December 17	1:00pm-4:00pm	F. W. Olin Hall 103
PHIL 101 C	Know, Val&Real	GILDEA, E.	Wednesday, December 15	9:00am-12:00pm	F. W. Olin Hall 107
PHIL 101 D	Know, Val&Real	GILDEA, E.	Saturday, December 18	9:00am-12:00pm	F. W. Olin Hall 102
PHIL 101 E	Know, Val&Real	GOETZ, S.	Saturday, December 18	9:00am-12:00pm	F. W. Olin Hall 201
PHIL 202	Logic	GOETZ, S.	Monday, December 13	9:00am-12:00pm	F. W. Olin Hall 103

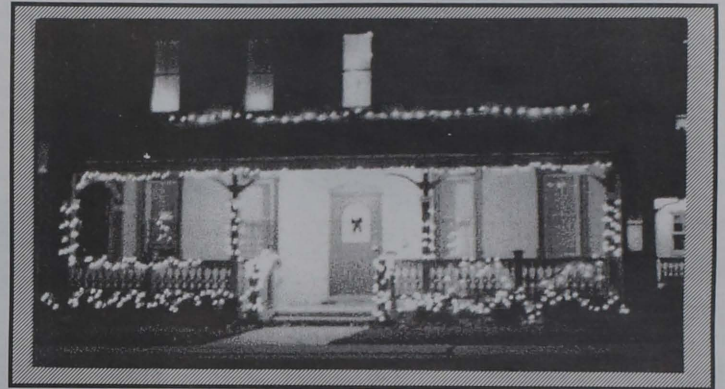
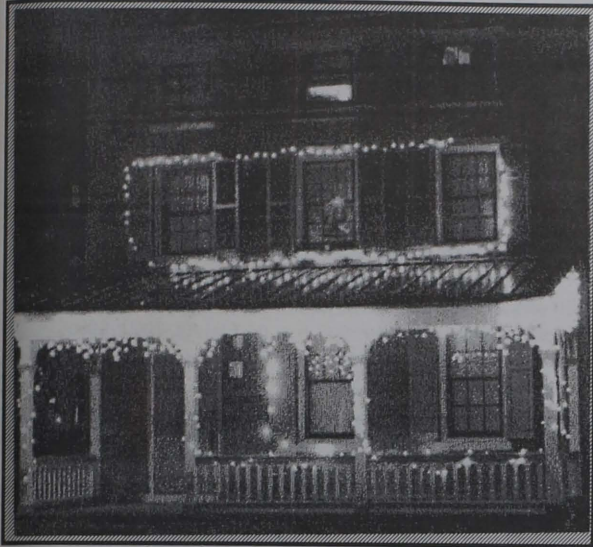


PHIL 211	World Religions	HARDMAN, K	Tuesday, December 14	9:00am-12:00pm	F. W. Olin Hall 102
PHIL 216	New Test:PaulEp	HARDMAN, K	Saturday, December 18	1:00pm-4:00pm	F. W. Olin Hall 102
PHIL 237	Pol Philosophy	STERN, P.	Tuesday, December 14	9:00am-12:00pm	Bomberger Hall 109
PHIL 309D	AfrAm Rel Exper	RICE, C.	Thursday, December 16	1:00pm-4:00pm	F. W. Olin Hall 205
—— Physics ——					
PHYS 111Q	Gen Physics I	NAGY, D.	Saturday, December 18	1:00pm-4:00pm	Pfahler Hall 100
PHYS 207	Modern Physics	TAKATS, M.	Friday, December 17	1:00pm-4:00pm	Pfahler Hall 214
PHYS 210	Mechanics I	CELLUCCI,	Tuesday, December 14	9:00am-12:00pm	Pfahler Hall Arr
PHYS 210A	Mechanics Lab	CELLUCCI,	Thursday, December 16	9:00am-12:00pm	Pfahler Hall Arr
—— Politics ——					
POL 100 A	Politics & Govt	FITZPATRIC	Tuesday, December 14	9:00am-12:00pm	Bomberger Hall 108
POL 100 B	Politics & Govt	KANE, H.	Wednesday, December 15	9:00am-12:00pm	Bomberger Hall 109
POL 100 C	Politics & Govt	EVANS, R.	Saturday, December 18	1:00pm-4:00pm	Bomberger Hall 108
POL 237	Pol Philosophy	STERN, P.	Tuesday, December 14	9:00am-12:00pm	Bomberger Hall 109
POL 242	Comp Politics	HOOD, S.	Friday, December 17	1:00pm-4:00pm	Bomberger Hall 109
POL 310	Congress & Pres	FITZPATRIC	Saturday, December 18	9:00am-12:00pm	Myrin Library 318
POL 321	Const Interpret	FITZPATRIC	Wednesday, December 15	9:00am-12:00pm	Myrin Library 318
POL 352	Theories of IR	EVANS, R.	Friday, December 17	9:00am-12:00pm	Bomberger Hall 109
POL 399J	European Pol	EVANS, R.	Thursday, December 16	1:00pm-4:00pm	Bomberger Hall 109
—— Psychology ——					
PSYC 100	Intr Psychology	STAFF	Saturday, December 18	1:00pm-4:00pm	F. W. Olin Hall Aud
PSYC 110	Research Method	FAGO, G.	Tuesday, December 14	9:00am-12:00pm	Thomas Hall 319
PSYC 110 B	Research Method	RICHARDSON	Tuesday, December 14	9:00am-12:00pm	F. W. Olin Hall 101
PSYC 210W	Experimental Ps	RIDEOUT, B	Saturday, December 18	9:00am-12:00pm	Thomas Hall 319
PSYC 260	Mntl Hlth-Alno	CHAMELISS,	Thursday, December 16	1:00pm-4:00pm	Thomas Hall 323
PSYC 265	Educational Psy	MOYAHON, M	Wednesday, December 15	9:00am-12:00pm	Pfahler Hall 106
PSYC 325	Behav Neurosci	RIDEOUT, B	Friday, December 17	9:00am-12:00pm	Thomas Hall 319
PSYC 327	Neurosci Lab	RIDEOUT, B	Thursday, December 16	9:00am-12:00pm	Thomas Hall 307
PSYC 355	Adolescent Psy	FAGO, G.	Monday, December 13	1:00pm-4:00pm	Thomas Hall 324
PSYC 360	Community Psy	ENGLAND, E	Wednesday, December 15	9:00am-12:00pm	Thomas Hall 319
PSYC 365	Organizational	RICHARDSON	Thursday, December 16	1:00pm-4:00pm	Thomas Hall 324
PSYC 375	Adulthood&Aging	ENGLAND, E	Saturday, December 18	9:00am-12:00pm	Thomas Hall 323
PSYC 455	Personality	CARLISO, K.	Tuesday, December 14	9:00am-12:00pm	Thomas Hall 323
PSYC 480	History& Theory	CHAMELISS,	Friday, December 17	1:00pm-4:00pm	Thomas Hall 314
—— Sociology ——					
SOC 100 A	Intro to Soc	GALLAGHER,	Wednesday, December 15	9:00am-12:00pm	Pfahler Hall 207
SOC 100 B	Intro to Soc	MACHADO, D	Friday, December 17	9:00am-12:00pm	F. W. Olin Hall 107
SOC 100 C	Intro to Soc	TAUSIG, J.	Wednesday, December 15	9:00am-12:00pm	Bomberger Hall 200
SOC 100 D	Intro to Soc	TAUSIG, J.	Saturday, December 18	9:00am-12:00pm	F. W. Olin Hall 101
SOC 227	Marriage/Family	GALLAGHER,	Thursday, December 16	1:00pm-4:00pm	Pfahler Hall 106
SOC 360K	Globalization	MACHADO, D	Saturday, December 18	9:00am-12:00pm	F. W. Olin Hall 107
—— Spanish ——					
SPAN 101 A	Elem Span I	BRINKMANN,	Wednesday, December 15	1:00pm-4:00pm	F. W. Olin Hall Aud
SPAN 101 B	Elem Span I	BRINKMANN,	Wednesday, December 15	1:00pm-4:00pm	F. W. Olin Hall Aud
SPAN 101 C	Elem Span I	BIEL, C.	Wednesday, December 15	1:00pm-4:00pm	F. W. Olin Hall Aud
SPAN 111 A	Interm Span I	BIEL, C.	Wednesday, December 15	1:00pm-4:00pm	F. W. Olin Hall Aud
SPAN 111 B	Interm Span I	HARDIN, M.	Wednesday, December 15	1:00pm-4:00pm	F. W. Olin Hall Aud
SPAN 111 C	Interm Span I	HARDIN, M.	Wednesday, December 15	1:00pm-4:00pm	F. W. Olin Hall Aud
SPAN 111 D	Interm Span I	BIEL, C.	Wednesday, December 15	1:00pm-4:00pm	F. W. Olin Hall Aud
SPAN 112	Interm Span II	BRINKMANN,	Wednesday, December 15	1:00pm-4:00pm	F. W. Olin Hall Aud
SPAN 201 A	Conv & Comp	CAMERON, D	Tuesday, December 14	1:00pm-4:00pm	F. W. Olin Hall 305
SPAN 201 B	Conv & Comp	DE ARANA,	Tuesday, December 14	1:00pm-4:00pm	Bomberger Hall 108
SPAN 251	Survey Span Lit	DE ARANA,	Friday, December 17	1:00pm-4:00pm	Thomas Hall 323
SPAN 352	Contemp HispNov	CAMERON, D	Friday, December 17	9:00am-12:00pm	F. W. Olin Hall 201
—— Women's Studies ——					
WMS 200	Women's Studies	OBOLER, R.	Saturday, December 18	9:00am-12:00pm	Bomberger Hall 108



# Winners from the Holiday Decorating Contest

First place: Hobson (\$75)  
Second place: Sturgis (\$50)  
Third place: Todd (\$25)



Participating Houses (clockwise from top left): Schaff Hall, Todd Hall, Wicks Senior Honors House, and 624 Main Street

Staff Photos by Sue Fialkowski

## STUDENT DISCOUNTS



### STUDENT DISCOUNTS

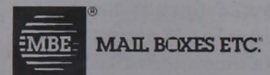
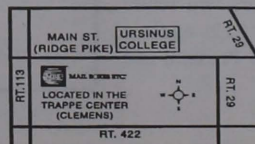
Available on all MBE services with Student I.D.

**OPEN 7 DAYS A WEEK!!**  
MON-FRI 8-8, SAT 9-5  
SUN 11-4

- B/W Copies
- COLOR Copies
- Transparencies
- Binding & Laminating
- Digital Print-From-Disk
- Resumé Paper
- Computer Time Rental
- UPS, FedEx, USPS
- Mailbox Services
- Hold-for-Pickup

Check us out at:

**in-town.com**



TRAPPE CENTER (CLEMENS MARKET)  
130 W. MAIN STREET, SUITE 144 • TRAPPE, PA 19426  
TEL: 610-409-2580 FAX: 610-409-2585  
MBE3575@MBE.COM

## GOT TOYS?

Come out and Donate a Toy for the  
Big Brother/Big Sister

### WINTER CARNIVAL

Sponsored by Residence Life on January 15, 1999

ALL TOYS CAN BE DROPPED OFF  
AT THE RESIDENCE LIFE OFFICE  
IN CORSON HALL



# Men's Basketball Wins 3 Straight

**Cory Braiterman**

*Staff Writer*

The Ursinus College Men's basketball team played an easy game against Haverford's squad Tuesday, December 7. The game was a 72-48 blowout for the Bears.

Twelve different players hit the floor for UC, including senior captain, forward Chris Ciunci and junior guard Luther Owens who both scored 16 points. Freshman Dan Luciano also added 14 points and 11 rebounds.

Playing against Knox on

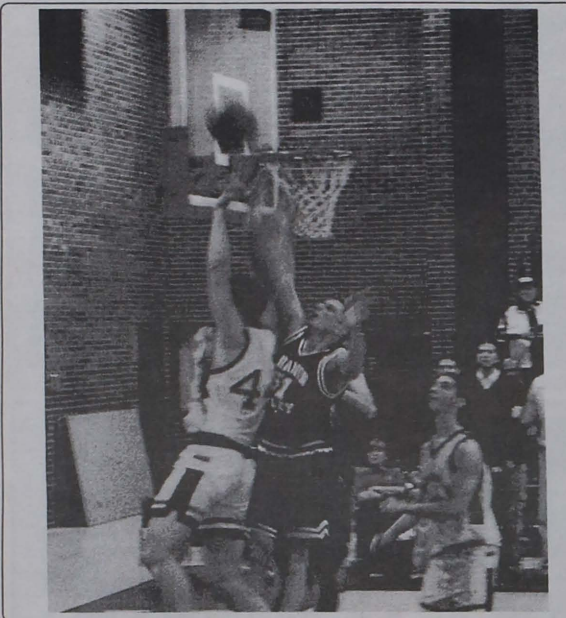
Thursday, December 9, the number one team in the Midwest Conference, the Bears pulled off one of the biggest wins of its young season, winning 85-74. Ciunci scored 28 points. Ciunci remarked, "We started playing as a team and our defense has gotten a lot better since the beginning of the season."

Junior guards Richie Barrett added 15 points, 12 rebounds, and four blocks to Owen's 23 points and 7 assists. It was the third consecutive victory for the Bears.

Saturday, December 11, the Bears won 63-62 over

Lebanon Valley. This win saw the Bears' fourth consecutive victory this season. Barrett scored a team high of 21 points and Owens added 14 points along with 8 assists. Luciano scored 11 points and added 10 rebounds. Ciunci says, "Luciano is starting to play more aggressive and helping out our offensive game." The Bears tailed ten turnovers compared to 28 for the Flying Dutchmen.

The Bears will play in the University of the Sciences Tournament on December 28-29.



Dan Luciano fights for position as he battles for the rebound.

*Staff Photo by Erny Hoke*



Richie Barrett takes the ball to the hoop and draws the foul.

*Staff photo by Erny Hoke*

## Sporting Events Over Break

**Gymnastics**  
@ Temple 1/12

Franklin & Marshall 1/12  
@ Washington 1/15

**Men's Basketball**  
@ Univ. Of the Sciences  
Tournament 12/28-29  
@ Stevens 1/8

**Women's Basketball**  
@ Webber College, Fla. 12/29-31  
Franklin & Marshall 1/12  
@ Washington 1/15

## First Win for Women's Basketball Team

**Diane Johnson**

*Sports Editor*

The women's basketball team captured their first win of the season on Saturday, December 11, against Knox College, 64-56.

Senior captain Shana Goane commented on the team's success: "We are a young, inexperienced team. But we do have the potential to surprise a few teams in the conference."

Sophomore forward Katie Shearer has been a powerful force in the paint. Shearer had 15 against Knox, and also contributed well under the boards.

Junior guard Kate Maxwell was named to the all-

tournament team in the Marymount Invitational at the start of the season. Maxwell says: "We were struggling at first to make a name for ourselves. We are a strong team and we're definitely improving each game."

The Bears will travel to Webber College in Florida for a tournament over Winter break.

Goane comments: "The whole team is really excited for the season. We should do well in Florida. We are one of the stronger teams in the tournament."

The Bears will return home January 12 against conference rival Franklin and Marshall.

# Great Gift Ideas

**\*\*\*Team Hats\*\*\***

**\*\*\*Ski Caps\*\*\***

**\*\*\*UC Crush Hats\*\*\***

**On Sale By: UC Baseball**

**See Coach**

**Thomas or a**

**Team member.**