




10-19-1935

Grizzly Gridder Ursinus College Official Football Program, October 19, 1935

Varsity Club
Ursinus College

Follow this and additional works at: https://digitalcommons.ursinus.edu/football_programs

 Part of the [Social History Commons](#), [Sports Studies Commons](#), and the [United States History Commons](#)

Click here to let us know how access to this document benefits you.

Recommended Citation

Club, Varsity, "Grizzly Gridder Ursinus College Official Football Program, October 19, 1935" (1935). *Ursinus College Football Programs*. 18.

https://digitalcommons.ursinus.edu/football_programs/18

This Book is brought to you for free and open access by the Football at Digital Commons @ Ursinus College. It has been accepted for inclusion in Ursinus College Football Programs by an authorized administrator of Digital Commons @ Ursinus College. For more information, please contact aprock@ursinus.edu.

OFFICIAL
PROGRAM

GRIZZLY

Old Timers'
Day

M
H
E
R
B
E
R
G

U
R
S
I
N
U
S



SATURDAY,
OCT. 19, 1935

GRIDDER

Price
25 Cents

Commercial Hotel

COLLEGEVILLE, PENNA.

Just Below the Railroad

Famous for Fine Foods

PHONE: COLLEGEVILLE 49



Special Dinners

ROAST CHICKEN with WAFFLES, full course - 85c

75c Dinners

TENDERLOIN STEAK
CHICKEN CHOW MEIN
ROAST CHICKEN

60c Dinners

BREADED VEAL CUTLETS
CREAMED CHICKEN on TOAST
ROAST SIRLOIN of BEEF

Dinners include choice of
Soup Tomato Juice or Fruit Cup
Choice of Two Vegetables
New Boiled Potatoes French Fries
Dessert Pie or Ice Cream
Coffee Tea or Milk

SPECIAL PLATTERS, SALADS, SANDWICHES OYSTERS, DEVILED CRABS, STEAMED CLAMS



When Bear and Dummy Meet



Muhlenberg

vs.



Last Year's Manager in a Pose

the



CHEER LEADERS AT WORK —



ALSO THE MANAGER AND HIS CREW



Kenneth B. Nace

Fifth Avenue and
Main Street
COLLEGEVILLE, PA.
PHONE 312

•
**FIRESTONE TIRES
WILLARD BATTERIES**

•
**Garage and Service
Station**

CONTENTS

| | Page |
|--|-------|
| Kicking Muhls vs. Growling Bears | - 3 |
| Eight Bears Plus Jack and Pete | - 4-5 |
| EDITORIALS | - 6 |
| Grizzly Gridder Gridiron Gossip | - 7 |
| Ursinus Varsity Squad | - 8 |
| In Waiting for the Kicking Muhls | - 9 |
| Ursinus Lineup | - 10 |
| Muhlenberg Lineup | - 11 |
| Brains and Brawn of the Muhls | - 12 |
| Muhlenberg Varsity Squad | - 13 |
| To What Ends Doth Football Drive Us | - 14 |
| Big Games Today | - 15 |
| The Frosh Outlook | - 16 |
| Conference Teams' Record, 1935 | - 17 |
| Index to Advertisers | - 20 |

Don't forget to visit

The Bakery

for their famous

Cin-Buns

Also all kinds of

**LUNCHES
CANDY**

**Soda Fountain
Cigars and
Cigarettes**

H. Ralph Graber



THE FLOYD-WELLS CO.
ROYERSFORD, PENNSYLVANIA



COSTELLO AND BASSMAN, LEADING INTERFERENCE, AS DAVISON GOES AROUND THE END

Kicking Muhls vs. Growling Bears

ON the eve of the twentieth battle between the Bears and the Muhls, recollections from past games appear vividly before us. The first contest between these two ancient foes took place twenty-nine years ago, back in 1906, when the present student body and even some of the faculty had not yet seen the light of day. Football, therefore, had no interest for them, but for many others the 35-0 victory of the Bears was undoubtedly good news.

Off and on until the present day, Muhlenberg has met us in a total of nineteen games, and come here today with the edge on the Grizzlies. For the Utzmen of today have a record of eight wins to the Bears' seven, four of the contests having resulted in ties, in 1916, '17, '32, and '34. So if Johnson hadn't stepped out of bounds last year as he caught that pass on the two yard line, the teams would be even-Stephen as they meet today.

The most decisive of all games belongs in the string of Muhlenberg's wins, for in 1921 they downed the Grizzlies to the tune of 68-0. Ursinus' best showing took place in 1908 when they piled up 47 points without letting the Muhls cross their own goal. The closest game is within the memory of the present juniors and seniors in College, all of whom recall that dismal Fathers' Day of two years ago when the enemy eked out a 3-0 victory as Al Wiener kicked a field goal in the waning minutes of the last quarter. The two 7-7 ties and the two 0-0 ties may have been more closely played, but the feeling of satisfaction was probably mutual on those days.

This year marks the ninth successive year the two teams have faced each other, and in the last eight games played the Bears show up better, with four wins, two losses, and two ties to their credit. This may be a sign that today is the enemy's day, but

they have to prove it before the "U" supporters are convinced.

In those twenty-nine years, the Muhlenberg men have totalled 225 points against the Bear elevens, while the Ursinus teams have managed to pile up only 173 counters. So being 52 points behind in the race may act as a spur to the Grizzlies that trot out on Patterson Field this afternoon. At any rate, time will tell.

Statistics

| Year | Ursinus | Muhlenberg |
|-------|---------|------------|
| 1906 | 35 | 5 |
| 1907 | 6 | 13 |
| 1908 | 47 | 0 |
| 1912 | 0 | 10 |
| 1916 | 7 | 7 |
| 1917 | 0 | 0 |
| 1918 | 0 | 19 |
| 1919 | 7 | 6 |
| 1920 | 14 | 39 |
| 1921 | 0 | 68 |
| 1922 | 0 | 28 |
| 1927 | 15 | 0 |
| 1928 | 6 | 0 |
| 1929 | 9 | 7 |
| 1930 | 13 | 14 |
| 1931 | 7 | 0 |
| 1932 | 0 | 0 |
| 1933 | 0 | 3 |
| 1934 | 7 | 7 |
| Total | 173 | 225 |

Won, 7; Lost, 8; Tied, 4; Percentage, .325



JOHNNY GRIMM
Guard

Our Co-Captains

"Reds" Bassman and Johnny Grimm share the distinction of being the only co-captains to lead the Grizzlies since 1898. Starting against the Muhls for their third and last time, they will be out there to avenge the defeat handed the Bears their first year and the tie of last year's game.



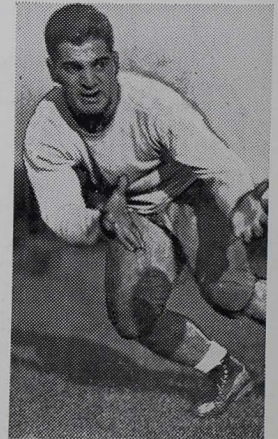
REDS BASSMAN
Back



JACK McAVOY
Head Coach



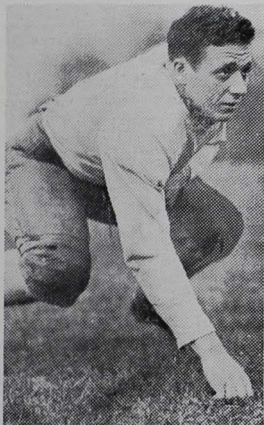
OSSIE RINEHART
Tackle



ANDY JAKOMAS
Back

Eight Bears Plus



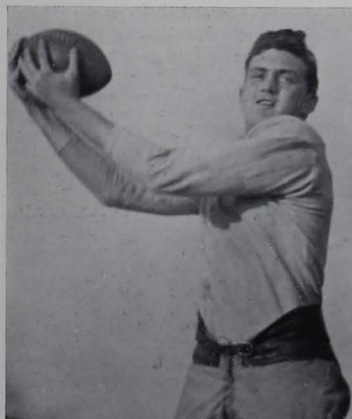


RAY COSTELLO
Back

Costello, playing his old position as plunging back where he was shifted from the line and Worster, tackle, who was out of play last year due to a broken elbow, will add plenty of weight to the Ursinus line-up. Grenawalt and Calvert each represent 6 feet 2 inches of fighting Grizzly and will also be opposing Muhlenberg for the third time.



CLAYT WORSTER
Tackle

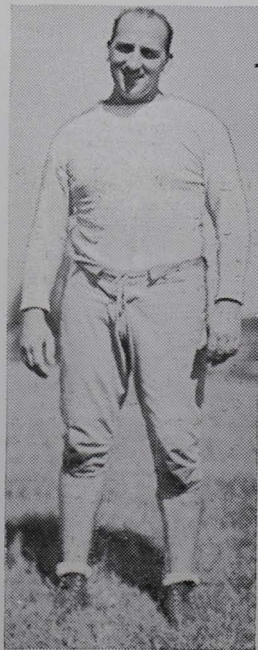


FULLER GRENAWALT
End



CLIFF CALVERT
Back

PETE STEVENS
Line Coach



Jack and Pete



GRIZZLY GRIDDER

OFFICIAL FOOTBALL PROGRAM FOR ALL
HOME GAMES OF URSINUS COLLEGE

PUBLISHED BY

VARSITY CLUB

URSINUS COLLEGE COLLEGEVILLE, PA.

Vol. III, No. 2 October 19, 1935 25 Cents

| | |
|---|---|
| THOMAS P. GLASSMOYER, '36 <i>Editor</i> | H. LEROY LANDIS, '36 <i>Business Manager</i> |
| FRANK E. REYNOLDS, '37 <i>Assistant Editor</i> | ABE E. LIPKIN, '37 <i>Assistant Business Manager</i> |

GREETINGS TO THE OLD GRADS

WITH Old Timers' Day here once again, the time comes for us to welcome them back to Ursinus and to wish them a pleasant stay, short though it may be. Old Timers' Day has become an institution here at Ursinus, and no annual celebration is dearer to the hearts of the students as well as those whom the holiday vitally affects.

Being students here ourselves, we cannot put into words the feelings an alumnus experiences upon his return to his alma mater; but from observation in the past, we know there must be some sort of emotional outburst going on inside of him. It is not possible to come back to the scene of many pleasant memories without feeling a bit homesick for the place.

So here we are at another Old Timers' Day, a day set aside for the entertainment of those Ursinusites who have completed their allotted four years here. The school has provided a football game and a dance to further this end, and now it is the duty of the student body to make each feel as if he were again one of us. Today is the day when all become students again, and revel in that transformation. So let's greet the old grads once more!

THE BEARS AND THE CONFERENCE

THE game with Muhlenberg marks not only the opening of the Conference schedule for the Bears, but also the first tilt in the entire conference. But with each member of the league having passed through two games already this fall, it is possible to draw some interesting conclusions as to the probable outcome of this season's fight.

Albright, one of the two new members of the conference, showed the makings of a strong eleven by opening its season with a 7-0 upset over Georgetown in Washington two weeks ago. This inference was strengthened last week when the Lions ran wild over Lafayette to pile up a 38-0 victory.

Drexel, the other new member of the league, shows only average strength, and possibly a mediocre team, having two tied games to her credit. A 7-7 draw with St. Joseph's opened her season and was almost

repeated last week when Juniata held the dragons to a 6-6 tie. Neither of these opponents is credited with outstanding elevens, yet the Dragons have always been a hard team to keep down.

F. and M., our traditional rival, is the outstanding contestant for the cup according to the dopesters in high circles. Starting the year with a 14-7 loss to Fordham, after holding the strong New York team, 7-0, until the last quarter; and following this with two decided victories over P. M. C., 14-0, and Moravian, 28-0, the Nevonians seem to be on their way to a remarkable record.

Gettysburg, the well-known Ursinus jinx, whom we have not defeated since 1931, holds down a position in the middle somewhere, which means they are hard to figure out. After defeating Juniata 14-0, the Bullets went to meet the Army and came back on the tail end of a 54-0 score. But this means nothing when ranking the Bullets among teams of their own class, and they may be the skeleton in the cupboard.

Dickinson, whom we do not meet this year, is generally considered among the weakest of the contenders for the cup. Two defeats are her record so far, one to Lehigh, 26-0, and one to Delaware, 10-7.

Muhlenberg, our foe today, is another of those unpredictable middle men. Her record so far indicates a 20-0 win over Baltimore College, a 7-0 defeat at the hands of Lafayette, and a 19-6 walk-away by Lebanon Valley.

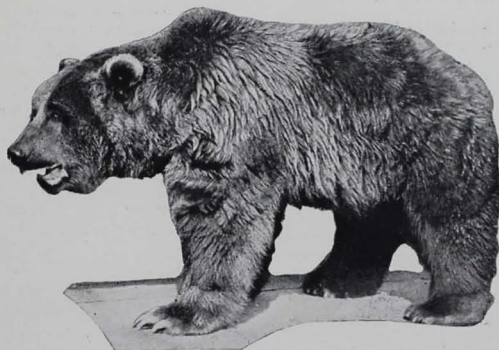
Ursinus has the poorest record of any. Three decisive losses to Villanova, Bucknell, and La Salle stand behind her. And unless the team shows a sudden spurt of the improbable, the Bears will be definitely out of the running. But the fight will still go on, and from the looks of the records, some one is out to break the streak of ties which have marked the end of the Conference season for the past three years.

BUCK UP, BEARS!

AFTER a streak of bad luck such as has settled upon the Grizzlies this year, attacks are usually made upon the supporters in the stands and the spirit is criticized by everyone including the cheerleaders. But the spirit that does exist may as well be dormant when the spectators must sit through a game like that of last Saturday.

The coaches and players alike insist that more "stuff" is in the team than has been shown so far, and that the Bucknell performance indicated the latent possibilities of the Ursinus eleven. But everyone is asking for the real thing, pointing out that latent possibilities cannot win ball games. And the "voice of the people" is right.

Many old timers have said that last Saturday's performance was the worst they ever witnessed with an Ursinus team on the field. This is strong language, from a group of Ursinus supporters, and the time for a reversal is at hand. There is no time like the present, so authorities say, for any action; so we might as well begin today, and push the Muhls all over the field. Let's buck up, and show the real "stuff" of which Grizzly Bears are made.



Grizzly Gridder Gridiron Gossip

THERE is a difference of 250 pounds between the five heaviest and five lightest men on the Bears' squad. Also the sum total heights of the five tallest is exactly one yard more than those of the runts.

In looking over these groups of lights and heavies and longs and shorts, it will be found that Gensler is in both the heaviest and shortest groups. Some Barrel!!

The homes of the various members on the team range from the swamps of New Jersey all the way to the smoke-stacks of Pittsburgh and the nationalities represented take in the territory from Moses' Promised Land to the English Isles.

Now if we only had Chief Broken Tooth Jenson here, we could boast of even wider range. But the last of the Red Skins went the way of all also-rans.

Hello, you Old Timers! Do you remember Muhlenberg's last trip here when "Reds" Wiener beat

us with a field goal—the same way he did Penn State that same year.

Jing seems to like to pick on the Muhls for special occasion. The last time they helped us amuse "those who pay" on Father's Day.

Say, Grads, speaking of remembering, do any of you still have the combination to the Press Bed lock in your grey matter? If so, kindly enlighten "Sparse" Nevergoll—these cold, outdoor, autumn nights are ruining his coiffure.

Here's some more facts about the team that might be of interest:

Press boxes, and autumn nights bring to our minds that there are still over a dozen bachelors on the squad. Heading the list are Fats Costello, Hap Porambo and German Wildonger. Come on Co-eds, there's a dance tonight!

DON'T FORGET—

Tonight — October 19

OLD TIMERS' DAY DANCE

—WITH—

Bruce Bell and His Orchestra

Thompson-Gay Gymnasium

8.00 P. M.

Price — \$1.50 per couple

Ursinus College Football Squad, 1935

| Jersey No. | Black | Red | Name | Class | Position | Height | Weight | School | Home |
|------------|-------|------|---------------------------------|-------|----------|--------|--------|------------------|---------------------|
| 17 | | 5** | Bassman, Herman (Co-Captain) | '36 | Back | 5' 9" | 176 | Central H. | Philadelphia, Pa. |
| 26 | | 6 | *Costello, Ray | '37 | Back | 5' 8" | 188 | Burlington H. | Burlington, N. J. |
| 22 | | 7 | Worster, Clayton | '37 | Tackle | 6' 2" | 195 | Haverford School | Meadowbrook, Pa. |
| 9 | | 8 | *Lamore, Gordon | '37 | End | 6' | 165 | Pottstown H. | Pottstown, Pa. |
| 15 | | 9 | Dresch, Chas. | '37 | Back | 5'11" | 165 | St. Clair H. | St. Clair, Pa. |
| 5 | | 10 | Brandt, Marlin | '37 | Back | 5' 6" | 152 | Hershey H. | Hershey, Pa. |
| 11 | | 11 | Bassler, Neison | '37 | Back | 5'11" | 163 | Tamaqua H. | Tamaqua, Pa. |
| 16 | | 12 | Nevergoll, Clair | '38 | Guard | 5' 8" | 165 | Kiski Prep. | New Kensington, Pa. |
| 12 | | 13 | Heiges, King | '37 | End | 5'11" | 160 | Wenonah M. A. | York, Pa. |
| 36 | | 14 | Vaccaro, Angelo | '38 | Back | 5' 6" | 150 | Newtown Prep. | Stuebenville, Ohio |
| 25 | | 16 | Joll, Laverne | '38 | Tackle | 6' 1" | 182 | F. & M. Prep. | South Fork, Pa. |
| 6 | | 20 | *Davison, John | '36 | Back | 5'11" | 167 | Abington H. | Roslyn, Pa. |
| | | 32 | Balsis, Leonard | '38 | Guard | 5' 8" | 160 | St. Clair H. | St. Clair, Pa. |
| 2 | | 34* | *Bradford, Gene | '36 | End | 5' 9" | 170 | Collingswood H. | Collingswood, N. J. |
| 29 | | 37 | Wildonger, Kenneth | '37 | Back | 6' | 180 | Allentown Prep. | Allentown, Pa. |
| 8 | | 38 | Lipka, Jos. | '38 | Back | 5'10" | 172 | Simon Gratz H. | Philadelphia, Pa. |
| 3 | | 39 | *Bonkoski, Vincent | '37 | Back | 5' 6" | 160 | Conshohocken H. | Conshohocken, Pa. |
| 31 | | 41** | *Calvert, Clifford | '36 | Back | 6' 2" | 190 | Overbrook H. | Philadelphia, Pa. |
| 4 | | 42 | Pancoast, Sieber | '37 | Center | 5'10" | 152 | Wenonah M. A. | Camden, N. J. |
| | | 42 | Russo, James | '38 | Guard | 5' 8" | 155 | Toms River H. | Toms River, N. J. |
| | | 45 | Quay, Harvey | '37 | Back | 5'11" | 190 | Wyoming Sem. | Kingston, Pa. |
| 18 | | 46 | Knoll, John | '38 | Tackle | 5'11" | 210 | Lansdale H. | Lansdale, Pa. |
| 34 | | 47 | Gaumer, Albert | '36 | Back | 5' 7" | 150 | Perkiomen Sem. | Germantown, Pa. |
| 28 | | 49 | Padden, Leo | '38 | End | 6' 2" | 172 | Kingston H. | Kingston, Pa. |
| 20 | | 51** | *Grenawalt, Fuller | '36 | End | 6' 2" | 205 | Wyoming Sem. | Wilkes-Barre, Pa. |
| 13 | | 52 | Kwiecinski, Henry | '36 | Guard | 6' | 170 | Hammonton H. | Hammonton, N. J. |
| 19 | | 55** | *Levin, Rubin | '36 | Tackle | 5'11" | 175 | Simon Gratz H. | Philadelphia, Pa. |
| 24 | | 56** | *Grimm, John (Co-Capt.) | '36 | Guard | 5'11" | 186 | N. Brighton H. | New Brighton, Pa. |
| 7 | | 58 | Porambo, John | '38 | Center | 5'11" | 165 | Summit Hill H. | Summit Hill, Pa. |
| 23 | | 59** | *Rinehart, Lachman | '36 | Tackle | 5' 9" | 195 | L. Merion H. | Bridgeport, Pa. |
| 33 | | 61 | Johnson, Norris | '36 | Center | 5'10" | 170 | Collegeville H. | Collegeville, Pa. |
| 27 | | 62 | Gensler, Harold | '36 | Tackle | 5' 8" | 195 | Collegeville H. | Collegeville, Pa. |
| 10 | | 63 | Bodley, Justus | '38 | End | 6' | 165 | Doylestown H. | Doylestown, Pa. |
| 21 | | 65 | James, Richard | '38 | Guard | 5'11" | 172 | Kingston H. | Kingston, Pa. |
| 32 | | 67 | Tworzydlo, Frank | '37 | End | 6' | 185 | Moorestown H. | Lenola, N. J. |
| | | 68 | Althouse, Herbert | '37 | Tackle | 5' 8" | 165 | Northeast H. | Philadelphia, Pa. |
| 35 | | 72 | Jakomas, Andrew | '37 | Back | 5' 8" | 170 | McKeesport H. | McKeesport, Pa. |

* Denotes one-letter men.

** Denotes two-letter men.

URSINUS COLLEGE FOOTBALL SCHEDULE

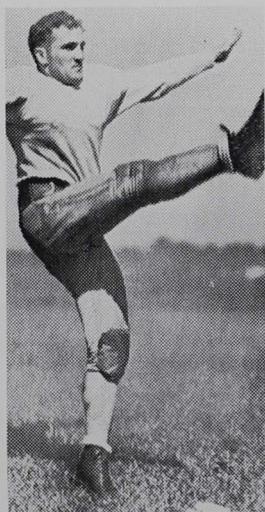
1935 SEASON

| | Ursinus | Opponent |
|------------------------|---------|--------------|
| September 28—Villanova | 0 | 31 |
| October 4—Bucknell | 0 | 20 |
| October 12—LaSalle | 0 | 18 |
| October 19—Muhlenberg | 0 | Home |
| October 26—Albright | 0 | Home |
| November 2—Drexel | 0 | Philadelphia |
| November 9—F. and M. | 0 | Lancaster |
| November 16—Gettysburg | 0 | Gettysburg |
| November 23—P. M. C. | 0 | Chester |

In Waiting for the Kicking Muhls—



GORDY LAMORE
End



BOUNCE BONKOSKI
Back



JOHNNY PORAMBO
Center

RUBE LEVIN
Guard



WILDONGER
Back

KWIECINSKI
Guard

TWORZYDLO
End



Hit the line hard
and hit it square

Play the game
and play it fair

Crash right through—
do or die

You've got to be good
to SATISFY.

URSINUS

PROBABLE LINEUP

| | | |
|----------------------|------|--------------------|
| Left End | (32) | Tworzydlo |
| Left Tackle | (23) | Rinehart |
| Left Guard | (13) | Kwiecinski |
| Center | (7) | Porambo |
| Right Guard | (24) | Grimm (Co-Capt.) |
| Right Tackle | (27) | Gensler |
| Right End | (10) | Bodley |
| Quarterback | (36) | Vaccaro |
| Left Halfback | (15) | Dresch |
| Right Halfback | (26) | Costello |
| Fullback | (17) | Bassman (Co-Capt.) |

| | | | |
|-----------------------|---|---|---------------------|
| Director of Athletics | - | - | Russell C. Johnson |
| Head Coach | - | - | John C. McAvoy |
| Line Coach | - | - | Peter P. Stevens |
| Freshman Coach | - | - | Donald Kellett |
| Manager | - | - | Alex Clawson |
| Trainer | - | - | Augustus P. Johnson |

THE SCORE

| | 1 | 2 | 3 | 4 | FINAL |
|-----------|---|---|---|---|-------|
| BEARS | | | | | |
| MUHLENB'G | | | | | |



64



MUHLENBERG

PROBABLE LINEUP

| | | | |
|----------------------|------|-------|-----------------|
| Left End | (22) | | Bartleson |
| Left Tackle | (9) | | Young |
| Left Guard | (13) | | Satsky |
| Center | (20) | | Eagle |
| Right Guard | (12) | | Bloom |
| Right Tackle | (18) | | Zimmerman |
| Right End | (2) | | Weiner |
| Quarterback | (19) | | Farrell |
| Left Halfback | (26) | | Laing |
| Right Halfback | (17) | | Gutekunst |
| Fullback | (25) | | Koehler (Capt.) |

| | | |
|-----------------|-------|-----------------------|
| Head Coach | | John L. Utz |
| Backfield Coach | | William Gutteron |
| Frosh Coach | | Charles Evansky |
| Manager | | Leonard C. Hodgkinson |

URSINUS MUHLENBERG

| | | |
|-----------------------|--|--|
| TOUCHDOWNS | | |
| POINT AFTER TOUCHDOWN | | |
| SAFETIES | | |
| FIELD GOALS | | |
| FIRST DOWNS | | |



Brains and Brawn of the Muhls



JOHNNY UTZ
Coach



GRANT BROWN
End



BILL GUTTERON
Asst. Coach



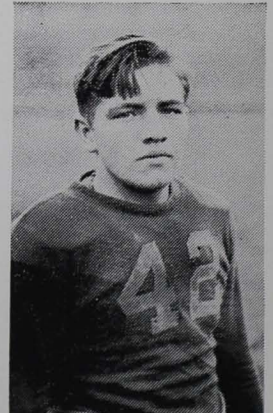
ED FARRELL
Back

"BULL" GESCHEL
Back

TOM KENNEDY
Center



LLOYD ZIMMERMAN
Tackle



Muhlenberg College Football Squad, 1935

| No. | Name | Position | Weight | Height | Age | Class | Home Town |
|-----|------------------|----------|--------|--------|-----|--------|-----------------------|
| 22 | Bartleson, Evan | end | 163 | 6' 2" | 20 | junior | Lansdowne |
| 21 | Blair, Jack | end | 182 | 6' 2" | 20 | soph | Woodbridge, N. J. |
| 12 | Bloom, Milton | tackle | 185 | 6' | 20 | junior | Newark, N. J. |
| 10 | Brown, Grant | end | 150 | 5' 8" | 20 | junior | Hempstead, N. Y. |
| 24 | Burkhauser, Val | back | 156 | 5'10" | 19 | soph | Trenton, N. J. |
| 23 | Cochrane, Gene | back | 156 | 5'11" | 21 | soph | Elizabeth, N. J. |
| 3 | Doabler, Went | back | 165 | 5'11" | 19 | soph | Vineland, N. J. |
| 20 | Eagle, Ralph | center | 185 | 6' | 19 | soph | Royersford |
| 36 | Erdosy, Al | back | 156 | 5' 8" | 22 | senior | Northampton |
| 19 | Farrell, Ed | back | 180 | 5' 7" | 20 | junior | Catasauqua |
| 17 | Gutekunst, Henry | back | 167 | 5' 9½" | 19 | soph | Perkasie |
| 29 | Geschel, Alf | back | 187 | 5' 8" | 22 | senior | Allentown |
| 40 | Hollenbach, Wm. | end | 155 | 5'11" | 20 | soph | Allentown |
| 35 | Hunsicker, Wm. | back | 181 | 6' | 18 | soph | Perkasie |
| 33 | Kennedy, Tom | center | 183 | 5' 9½" | 20 | junior | Allentown |
| 25 | Koehler, George | back | 177 | 5'11" | 20 | senior | Bethlehem |
| 4 | Kulik, Steve | end | 145 | 5'11" | 19 | soph | Allentown |
| 26 | Laing, Wm. | back | 160 | 5' 7" | 20 | junior | Grantwood, N. J. |
| 5 | Pfeifer, Wm. | center | 187 | 5'10" | 20 | senior | Leechburg |
| 11 | Poust, Kenneth | guard | 171 | 5' 9" | 19 | soph | Alburtis |
| 32 | Reppert, Chas. | guard | 171 | 5' 9½" | 19 | soph | Hamburg |
| 13 | Satsky, Henry | guard | 182 | 5'10" | 20 | junior | Newark, N. J. |
| 7 | Schantz, Joe | tackle | 169 | 5'10" | 21 | senior | Quakertown |
| 34 | Stanick, Vic | tackle | 220 | 6' 1" | 18 | soph | Sergeantsville, N. J. |
| 16 | Thomas, Tom | end | 181 | 6' 1" | 22 | soph | Nanticoke |
| 2 | Weiner, Harold | guard | 165 | 5' 8" | 21 | senior | Newark, N. J. |
| 5 | Weisenberg, Bob | center | 173 | 5'10" | 22 | junior | Bethlehem |
| 9 | Young, John | tackle | 185 | 6' 1" | 21 | soph | Allentown |
| 18 | Zimmerman, Lloyd | tackle | 186 | 6' 1" | 20 | junior | Mechanicsburg |
| 37 | Green, Art | center | 180 | 5' 7" | 20 | junior | Bethlehem |
| 6 | Patterson, Alan | end | 175 | 5' 8" | 22 | senior | Waverly Place, N. Y. |

MUHLENBERG COLLEGE FOOTBALL SCHEDULE 1935 SEASON

| | | Muhl | Opponent |
|-----------|----------------------------|------|---------------|
| September | 27—University of Baltimore | 20 | 0 |
| October | 5—Lafayette | 0 | 7 |
| October | 12—Lebanon Valley | 6 | 19 |
| October | 19—Ursinus | | Collegeville |
| October | 26—Gettysburg | | Gettysburg |
| November | 2—Franklin & Marshall | | Home |
| November | 9—Lehigh | | Bethlehem |
| November | 16—Fordham | | New York City |
| November | 23—Dickinson | | Home |
| November | 28—Albright | | Reading |

To What Ends Doth Football Drive Us!

The Story of Mother's Little Boy at College

MOTHERS often repeat, with a tone of admiration, the little follies of their sons, committed in such great numbers during their more tender ages. It is their common belief (among the mothers, I mean) that when their sons go away to college they have passed their age of folly and are ready to settle down to the life of a normal human being. But mothers forget the evil influence of football upon their prides and joys, and are prone to disregard the necessity (necessary to the sons) of being present at every game which the old home team plays.

This accounts for the string of hitch-hikers that line the highways near college campuses on the day of away games, for paid transportation is unheard-of and employed only as a last resort. Equally unheard-of is a paid admission, and anyone putting forth the required half-buck is looked upon as an out-cast by his fellow chiselers. So after someone picks up the son, and his transportation is taken care of, he begins to plan a way of effecting an entrance to the field.

The plans that are apt to materialize in the college boy's mind are innumerable, often fantastic, and what is more remarkable than anything, usually successful. The customary and easiest way is to walk in with the band, hauling instruments, or overcoats if the day is cold. This is considered the best method because of its adaptability to fields, large and small, closely guarded or altogether lacking police protection. But as the son progresses in college, his mind is improved, through some unknown process, and he begins to develop more subtle tricks. A white coat, and suitcase, and a business-like air was employed

several times by a pre-ministerial friend of mine, who presented himself as the official year-book photographer. Equally successful is the person who gets hold of some official stationery and writes to the athletic director of the opposing team for complimentary tickets. Another method of a similar type is that of conniving with the editor of the newspaper, who secures press passes for about ten friends. If the sports editor is lucky he sometimes gets one of these. If not he either pays or writes up the game from the city paper's account.

So the follies of youth continue from the age of freshman innocence to that of senior superiority, growing more foolish as the experience of the actor broadens. But what cares the college man for a little foolishness, when the sight of a football game is within view? And when some cleverly planned foolishness will not succeed, there is always the fence to jump when the policeman's eyes are turned the other way.

United Pipe & Supply Co., Inc.

PIPE — VALVES — FITTINGS

Plumbing and Heating Supplies

Phone 4900

FORD AND WASHINGTON STS.
NORRISTOWN, PA.

•
Rugs
Carpets
Venetian Blinds
Linoleums
Lamps
•



•
Shades
Awnings
Upholstering
Decorative
Fabrics
•

DeKALB and AIRY STS.

INTERIOR DECORATOR

NORRISTOWN, PA.

BIG GAMES TODAY

How Ursinus Boys Pick Them

| | Bassman | Baddow | Bodley | Bradford | Brandaur | Brandt | Gladfeiler | Glassmoyer | Otto | Pancoast | Reese | Spangler | Stoudt | Throne | Tworzydlo | Weidner | Wildonger | Worster | Rinehart | Consensus | Total |
|--------------------|---------|--------|--------|----------|----------|--------|------------|------------|------|----------|-------|----------|--------|--------|-----------|---------|-----------|---------|----------|-----------|-------|
| *Bucknell | 0 | T | 0 | 0 | 0 | 0 | 0 | 0 | 0 | 0 | 0 | 0 | 0 | 0 | 0 | 0 | 0 | 0 | 0 | 0 | 8 |
| Western Maryland | 0 | T | 0 | 0 | 0 | 0 | 0 | 0 | 0 | 0 | 0 | 0 | 0 | 0 | 0 | 0 | 0 | 0 | 0 | 0 | 10 |
| Carnegie | | | | | | | | | 0 | | | | | | | | | | | | 1 |
| Temple | 0 | 0 | 0 | 0 | 0 | 0 | 0 | 0 | 0 | 0 | 0 | 0 | 0 | 0 | 0 | 0 | 0 | 0 | 0 | 0 | 18 |
| Penn | 0 | 0 | 0 | 0 | 0 | 0 | 0 | 0 | 0 | 0 | 0 | 0 | 0 | 0 | 0 | 0 | 0 | 0 | 0 | 0 | 11 |
| Columbia | | | 0 | 0 | 0 | 0 | 0 | 0 | 0 | 0 | 0 | 0 | 0 | 0 | 0 | 0 | 0 | 0 | 0 | 0 | 8 |
| Dartmouth | 0 | 0 | 0 | 0 | 0 | 0 | 0 | 0 | 0 | 0 | 0 | 0 | 0 | 0 | 0 | 0 | 0 | 0 | 0 | 0 | 19 |
| Brown | | | | | | | | | | | | | | | | | | | | | 0 |
| *Drexel | 0 | 0 | 0 | 0 | 0 | 0 | 0 | 0 | 0 | 0 | 0 | 0 | 0 | 0 | 0 | 0 | 0 | 0 | 0 | 0 | 0 |
| Lebanon Valley | 0 | 0 | 0 | 0 | 0 | 0 | 0 | 0 | 0 | 0 | 0 | 0 | 0 | 0 | 0 | 0 | 0 | 0 | 0 | 0 | 19 |
| Vanderbilt | 0 | 0 | 0 | 0 | 0 | 0 | 0 | 0 | 0 | 0 | 0 | 0 | 0 | 0 | 0 | 0 | 0 | 0 | 0 | 0 | 11 |
| Fordham | | 0 | | 0 | 0 | 0 | 0 | 0 | 0 | 0 | 0 | 0 | 0 | 0 | 0 | 0 | 0 | 0 | 0 | 0 | 8 |
| *F. and M. | 0 | 0 | 0 | 0 | 0 | 0 | 0 | 0 | 0 | 0 | 0 | 0 | 0 | 0 | 0 | 0 | 0 | 0 | 0 | 0 | 19 |
| Geneva | | | | | | | | | | | | | | | | | | | | | 0 |
| *Gettysburg | 0 | 0 | 0 | 0 | 0 | 0 | 0 | 0 | 0 | 0 | 0 | 0 | 0 | 0 | 0 | 0 | 0 | 0 | 0 | 0 | 12 |
| Mt. St. Mary's | 0 | 0 | 0 | 0 | 0 | 0 | 0 | 0 | 0 | 0 | 0 | 0 | 0 | 0 | 0 | 0 | 0 | 0 | 0 | 0 | 7 |
| Lehigh | 0 | T | 0 | 0 | 0 | 0 | 0 | 0 | 0 | 0 | 0 | 0 | 0 | 0 | 0 | 0 | 0 | 0 | 0 | 0 | 0 |
| Penn State | 0 | T | 0 | 0 | 0 | 0 | 0 | 0 | 0 | 0 | 0 | 0 | 0 | 0 | 0 | 0 | 0 | 0 | 0 | 0 | 18 |
| *P. M. C. | 0 | 0 | 0 | 0 | 0 | 0 | 0 | 0 | 0 | 0 | 0 | 0 | 0 | 0 | 0 | 0 | 0 | 0 | 0 | 0 | 0 |
| N. Y. U. | 0 | 0 | 0 | 0 | 0 | 0 | 0 | 0 | 0 | 0 | 0 | 0 | 0 | 0 | 0 | 0 | 0 | 0 | 0 | 0 | 19 |
| Ohio State | 0 | 0 | 0 | 0 | 0 | 0 | 0 | 0 | 0 | 0 | 0 | 0 | 0 | 0 | 0 | 0 | 0 | 0 | 0 | 0 | 17 |
| Northwestern | | | | 0 | 0 | 0 | 0 | 0 | 0 | 0 | 0 | 0 | 0 | 0 | 0 | 0 | 0 | 0 | 0 | 0 | 2 |
| Purdue | 0 | 0 | 0 | 0 | 0 | 0 | 0 | 0 | 0 | 0 | 0 | 0 | 0 | 0 | 0 | 0 | 0 | 0 | 0 | 0 | 19 |
| Chicago | | | | | | | | | | | | | | | | | | | | | 0 |
| Rice | 0 | 0 | 0 | 0 | 0 | 0 | 0 | 0 | 0 | 0 | 0 | 0 | 0 | 0 | 0 | 0 | 0 | 0 | 0 | 0 | 10 |
| Southern Methodist | 0 | 0 | 0 | 0 | 0 | 0 | 0 | 0 | 0 | 0 | 0 | 0 | 0 | 0 | 0 | 0 | 0 | 0 | 0 | 0 | 9 |
| Susquehanna | | | | 0 | 0 | 0 | 0 | 0 | 0 | 0 | 0 | 0 | 0 | 0 | 0 | 0 | 0 | 0 | 0 | 0 | 4 |
| St. Joseph's | 0 | 0 | 0 | 0 | 0 | 0 | 0 | 0 | 0 | 0 | 0 | 0 | 0 | 0 | 0 | 0 | 0 | 0 | 0 | 0 | 15 |
| Tulane | | | | 0 | 0 | 0 | 0 | 0 | 0 | 0 | 0 | 0 | 0 | 0 | 0 | 0 | 0 | 0 | 0 | 0 | 2 |
| Minnesota | 0 | 0 | 0 | 0 | 0 | 0 | 0 | 0 | 0 | 0 | 0 | 0 | 0 | 0 | 0 | 0 | 0 | 0 | 0 | 0 | 17 |
| Harvard | | | | 0 | 0 | 0 | 0 | 0 | 0 | 0 | 0 | 0 | 0 | 0 | 0 | 0 | 0 | 0 | 0 | 0 | 1 |
| Army | 0 | 0 | 0 | 0 | 0 | 0 | 0 | 0 | 0 | 0 | 0 | 0 | 0 | 0 | 0 | 0 | 0 | 0 | 0 | 0 | 18 |
| Navy | 0 | 0 | 0 | 0 | 0 | 0 | 0 | 0 | 0 | 0 | 0 | 0 | 0 | 0 | 0 | 0 | 0 | 0 | 0 | 0 | 14 |
| Yale | | | | 0 | 0 | 0 | 0 | 0 | 0 | 0 | 0 | 0 | 0 | 0 | 0 | 0 | 0 | 0 | 0 | 0 | 5 |
| Michigan | 0 | 0 | 0 | 0 | 0 | 0 | 0 | 0 | 0 | 0 | 0 | 0 | 0 | 0 | 0 | 0 | 0 | 0 | 0 | 0 | 16 |
| Wisconsin | 0 | | | | 0 | 0 | 0 | 0 | 0 | 0 | 0 | 0 | 0 | 0 | 0 | 0 | 0 | 0 | 0 | 0 | 3 |
| Notre Dame | 0 | 0 | 0 | 0 | 0 | 0 | 0 | 0 | 0 | 0 | 0 | 0 | 0 | 0 | 0 | 0 | 0 | 0 | 0 | 0 | 12 |
| Pitt | 0 | | | 0 | 0 | 0 | 0 | 0 | 0 | 0 | 0 | 0 | 0 | 0 | 0 | 0 | 0 | 0 | 0 | 0 | 7 |
| *Villanova | 0 | 0 | 0 | 0 | 0 | 0 | 0 | 0 | 0 | 0 | 0 | 0 | 0 | 0 | 0 | 0 | 0 | 0 | 0 | 0 | 19 |
| *La Salle | | | | | | | | | | | | | | | | | | | | | 0 |
| Swarthmore | 0 | 0 | 0 | 0 | 0 | 0 | 0 | 0 | 0 | 0 | 0 | 0 | 0 | 0 | 0 | 0 | 0 | 0 | 0 | 0 | 2 |
| Dickinson | 0 | 0 | 0 | 0 | 0 | 0 | 0 | 0 | 0 | 0 | 0 | 0 | 0 | 0 | 0 | 0 | 0 | 0 | 0 | 0 | 17 |

*Our Opponents

Hardware

Plumbing

GEORGE F. CLAMER

COLLEGEVILLE, PA.

Oil Burners

Heating

Lighting

Parke's Gold Camel Tea Balls . . .

INDIVIDUAL SERVICE

"Every Cup a Treat"

Coffees - Teas - Spices
Canned Foods - - Flavoring Extracts

L. H. PARKE COMPANY
PHILADELPHIA PITTSBURGH

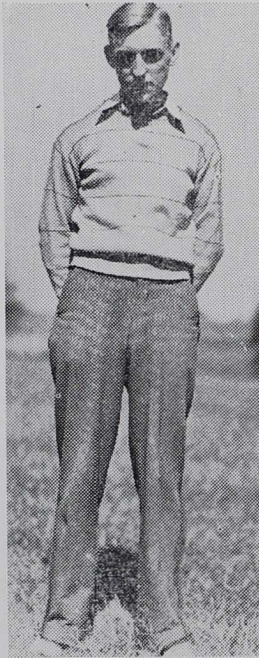
The Frosh Outlook

THE Ursinus Cubs look forward to their first victory and the start of a repetition of the record set up by the yearlings of two seasons ago. The National Farm School will play host to Don Kellet's light but scrappy eleven.

This is Don's first year at Ursinus, the former University quarterback replacing Swede Paul, who is now coaching Pottstown High. Coach Kellet has spent most of the practices so far in scrimmaging the Cubs against the varsity. However, enough time has been spent on the offensive to develop a lightning-fast running attack and deceptive passing plays.

The young Grizzlies boast several triple threat men together with some plunging backs and a pair of 195-pound tackles to bolster up the otherwise light line. What the Cubs lack in reserve material and weight, they make up in aggressiveness. The yearlings' new coach banks all his hopes for a successful season on this spirit to enable them to carry through their plays.

With eight regulars leaving the varsity at the close of this season, the yearlings have a good chance for jumping into a varsity position next year. However, we're not looking for varsity material yet so come on, Cubs, let's go!



JACK BROWN
Frosh Manager



Freshman Football Schedule

| | | | | |
|----------|----|----------------------|---------|------|
| October | 19 | National Farm School | - | Away |
| October | 26 | Perkiomen Prep. | - - - | Away |
| November | 2 | Drexel Frosh | - - - - | Away |
| November | 8 | Brown Prep. | - - - - | Home |

STATISTICS OF FRESHMAN SQUAD

| Player | Height | Weight | Position |
|--------------------|--------|--------|----------|
| Broomall, Bruce | 5-11 | 176 | Back |
| Connor, John | 5-7 | 165 | end |
| Davison, Harry | 5-10 | 160 | back |
| Eshbach, Glenn | 6-0 | 160 | end |
| Gurzynski, Raymond | 5-11 | 160 | back |
| Gushard, Howard | 5-11½ | 195 | tackle |
| Kasperan, Michael | 5-11 | 175 | back |
| Knauber, Lee | 5-9 | 162 | back |
| Mackinson, John | 5-8 | 140 | back |
| Mecklas, George | 5-10½ | 165 | center |
| Otto, Aaron | 5-10 | 170 | tackle |
| Paisley, Spencer | 5-10 | 158 | end |
| Power, William | 5-10 | 145 | back |
| Smith, Howard | 5-10½ | 163 | back |
| Taylor, Richard | 6-1 | 153 | guard |
| Todt, Fred | 5-11 | 187 | guard |
| Weil, Burton | 5-10 | 155 | end |
| Yoemans, William | 5-10 | 165 | guard |
| Young, Carl | 5-11½ | 170 | back |

Compliments

**Adam Scheidt
Brewing Co.**

of Norristown, Pa.

VALLEY FORGE SPECIAL BEER

The Conference Teams' Records, 1935

Albright vs.

| | | |
|-----------------------|----|---|
| Georgetown | 7 | 0 |
| Lafayette | 38 | 0 |
| Won 2; Lost 0; Tied 0 | | |
| Percentage—1.000 | | |

Drexel vs.

| | | |
|-----------------------|---|---|
| St. Joseph's | 7 | 7 |
| Juniata | 6 | 6 |
| Won 0; Lost 0; Tied 2 | | |
| Percentage—.000 | | |

Muhlenberg vs.

| | | |
|-----------------------|----|----|
| Baltimore | 20 | 0 |
| Lafayette | 0 | 7 |
| Lebanon Valley | 6 | 19 |
| Won 1; Lost 2; Tied 0 | | |
| Percentage—.333 | | |

F. & M. vs.

| | | |
|-----------------------|----|----|
| Fordham | 7 | 14 |
| P. M. C. | 14 | 0 |
| Moravian | 28 | 0 |
| Won 2; Lost 1; Tied 0 | | |
| Percentage—.666 | | |

Gettysburg vs.

| | | |
|-----------------------|----|----|
| Juniata | 14 | 0 |
| Army | 0 | 54 |
| Won 1; Lost 1; Tied 0 | | |
| Percentage—.500 | | |

Dickinson vs.

| | | |
|-----------------------|---|----|
| Delaware | 7 | 10 |
| Lehigh | 0 | 26 |
| Won 0; Lost 2; Tied 0 | | |
| Percentage—.000 | | |

Felix Spatola & Sons

419 South Front Street
PHILADELPHIA

•
Exclusive Penna. Agents

*Italian Swiss Colony
Wines*

The Picture's the Thing—

•
And a Good Picture Deserves a
Good Printing Plate—40 Years
Experience Amply Qualify Us to
Render You Most Excellent Engrav-
ing Service

Phototype Engraving Company, Inc.

147 North Tenth Street, Philadelphia
SCHOOL AND COLLEGE DIVISION

FOR YOUR SOCIAL ACTIVITIES

IT'S THE

VALLEY FORGE HOTEL

28 EAST MAIN STREET

NORRISTOWN, PA.

PHONE 3260

S. GARWOOD KULP, *Manager*

Compliments of
A FRIEND

CAMPUS
 SANDWICH
 SHOP

716 MAIN
 STREET

The
 COLLEGEVILLE
 MILLS

RALPH E. MILLER
 Manager

COLLEGEVILLE, PA.

SARONY

Official Photographer for Ursinus

1206 Chestnut Street Philadelphia
 Pennypacker 8771

After the Game Visit . . .

Winkler's Drug Store
 COLLEGEVILLE, PA.

MEET YOUR OLD FRIENDS AND
 GREET NEW FRIENDS

Headquarters for Drugs and Surgical Supplies,
 Ice Cream, Sandwiches, Sodas, Books,
 Papers, Magazines

| | | |
|--|---|--|
| | | |
| | <p><i>Compliments of</i> A FRIEND</p> | |
| | | |

Established 1865

DAVID C. BRADLEY CO.

"Meats" With Your Approval

HOTELS, CLUBS and
CAFE SPECIALTIES



22-24 So. Delaware Avenue
PHILADELPHIA

Bell, Lombard (2154) Keystone, Main 8131
 (2155)

The - - -

Aristocrat

Ice Cream Par Excellence

B

Burdan's Ice Cream

B

PHONE: POTTSTOWN 816

Visit . . .

THE
**Ursinus College
 Supply Store**

"The Campus Store"



JAMES M. SMITH, Mgr.

**KENNETH CLOUSE, 1st Assistant
 "JUNIOR" HARBAUGH, 2nd Assistant**

Index to Advertisers



| | | | | | |
|------------------------|-----------|--------------------|--------------------------------|-----------|-------------------|
| Bradley, David C., Co. | - - - - - | 19 | Nelson's Dairies | - - - - - | Inside Back Cover |
| Burdan's Ice Cream | - - - - - | 19 | Parke, L. H. Co. | - - - - - | 15 |
| Campus Sandwich Shop | - - - - - | 18 | Perkiomen Transit Co. | - - - - - | Inside Back Cover |
| Clamer, George F. | - - - - - | 15 | Phototype Engraving Co., Inc. | - - - - - | 17 |
| College Supply Store | - - - - - | 20 | Sarony Studios | - - - - - | 18 |
| Collegeville Bakery | - - - - - | 2 | Scheidt, Adam, Brewing Co. | - - - - - | 16 |
| Collegeville Mills | - - - - - | 18 | Schuylkill Valley Grocery Co. | - - - - - | 20 |
| Commercial Hotel | - - - - - | Inside Front Cover | Spatola, Felix & Sons | - - - - - | 17 |
| Floyd-Wells Co. | - - - - - | 2 | United Pipe & Supply Co., Inc. | - - - - - | 14 |
| Guthridge, Richard J. | - - - - - | Outside Back Cover | Valley Forge Hotel | - - - - - | 17 |
| Lyon & Armor, Inc. | - - - - - | Inside Back Cover | Winkler's Drug Store | - - - - - | 18 |
| Nace, Kenneth B. | - - - - - | 2 | Wassell Bakery | - - - - - | 20 |
| | | | Yost, Walter F., Rug Shop | - - - - - | 14 |

**Really Good
 Pies**

baked
 by
Wassell

Compliments of

**Schuylkill Valley
 Grocery
 Company**

N
e
i
s
o
n
'
s

D
a
i
r
i
e
s

Norristown,
Pa.



We
Supply
Ursinus
College

PERKIOMEN TRANSIT CO.

*Buses for All
Occasions*

FOR RATES CALL SCHWENKSVILLE
6-R-3

•
JOHN C. MARKLEY, '24
PROPRIETOR
Schwensville, Pa.

Printers of

The 1936 Ruby

•
We have a school service de-
partment devoted to han-
dling school and college pub-
lications exclusively!

•
LYON & ARMOR

INCORPORATED

147-151 N. TENTH ST., PHILADELPHIA
Trade Papers, Catalogs, Magazines

The Feroe Press

ROBERT C. HAWK,
MANAGER



Inquiries are
solicited
concerning the
printing of
school
publications



Hanover &
South Streets
Pottstown,
Penna.

URSINUS BUILDS THE BEARS

I Build Their Caverns

CURTIS - BRODBECK - CLAMER



RICHARD J. GUTHRIDGE
CONSTRUCTOR of BUILDINGS

213 E. FREEDLEY ST.
NORRISTOWN, PA.



HONESTY + SERVICE + WORKMANSHIP